



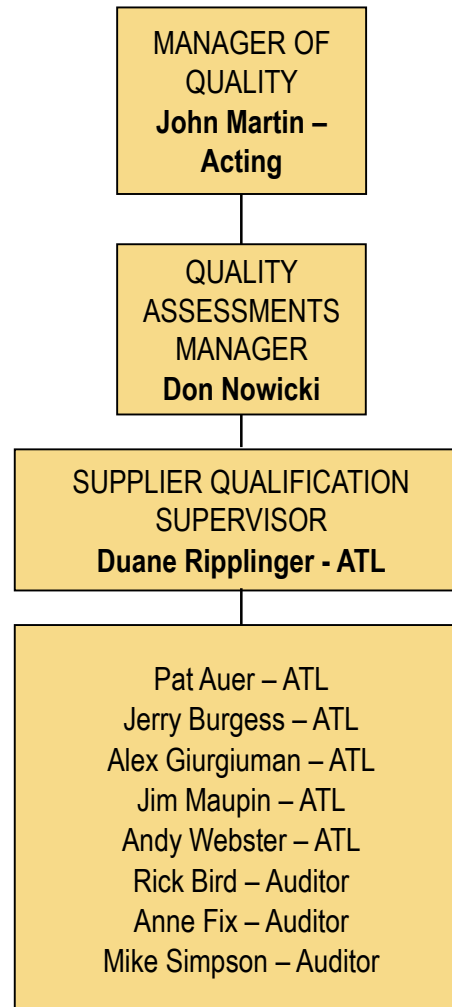
Waste Treatment Plant Project



2016 Supply Chain
Collaboration Event

Supplier Qualification
WTP Quality Manual Review

Supplier Qualification Organization



Supplier Qualification Process



Quality Assurance Manual Review
Quality Assurance Program Review
Qualification Audit
Implementation Audit
Placed on Evaluated Suppliers List
Placed Into Triennial Audit Schedule
Annual Supplier Reviews
Surveillances

Quality Assurance Manual Review

- **REVIEW** the submitted supplier QA Manual (QAM) in accordance with 24590-WTP-GPP-RAQA-QA-2003, *Supplier Quality Assurance Manual Reviews*.
 - The QAM is a description of the QA Program (QAP) that provides controls for the WTP quality requirements applicable to the scope of work in the PO

What does that mean?

ASME states:

- “It is not a requirement nor desirable that detailed written technical procedures, work instructions, travelers, and/or forms be a part of the Quality Assurance Manual

but rather

- the QAM satisfactorily address the controls of the applicable NQA-1 Standard requirements for documents that specify quality requirements or prescribe activities affecting quality.”

Quality Assurance Program Review

- **REVIEW** the supplier QA Program in accordance with 24590-WTP-GPP-RAQA-QA-2001, *Supplier Qualification Audits*.

Determines if the QA program, i.e.,

QA manual
+
Procedures
+
Instructions
+
Forms

Collectively meet the requirements of the WTP requirements applicable to the scope of work.

What does that mean?

QAP Review

- Procedures and instructions tell you how to implement the QAP. They:

Specify Quality Requirements

Prescribe Activities affecting quality

- Forms provide objective evidence of program implementation

■ Qualification Audit (no PO) / Implementation Audit

- Audit performed in accordance with 24590-WTP-GPP-RAQA-QA-2001, *Supplier Quality Assurance Audits*, to evaluate the supplier's:

QA Program Implementation

Technical and Quality capability, and

Personnel

What does that mean?

Evaluated Supplier's List

- The Evaluated Supplier's List (ESL) documents that the Supplier has a qualified QAP and can perform the contracted scope of work
- Unless, there are restrictions placed on the Supplier.
- Restrictions can be placed as preventive measures to ensure that WTP does not provide work to the supplier in the area restricted or areas that were not observed.
 - Example
 - Design Control, Requirement 3, not part of the scope of work.
 - Audit concludes the QAP is effectively implemented (for scope of work)
 - Restriction placed on Requirement 3, so WTP does not assign design work to Supplier

Evaluated Supplier's List

- Restrictions can be placed due to ineffective implementation of a quality area(s).
 - Example
 - Software part of the scope of work
 - Audit concludes the QAP is ineffective regarding software
 - Supplier Corrective Action Report Issued and Stop Ship and/or Stop Work issued
 - Restriction placed on ESL for software until QAP deficiencies are corrected

Annual Supplier Reviews / Surveillances

- Annual Supplier Reviews performed every non-audit year to evaluate:
 - Work scope changes
 - Organization changes
 - Significant implementing procedure changes
 - Supplier Corrective Action Report progress
 - NCRs
 - Applicability of ESL Restrictions
- Surveillances are performed to solve potential items from ASRs, Audit Gaps, evaluate the impact of changes on the QAP, if needed.

QUESTIONS ?